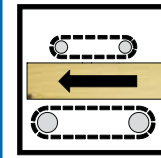






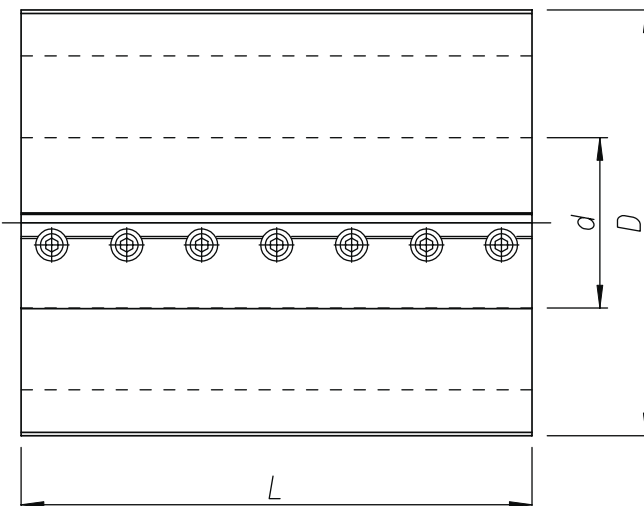
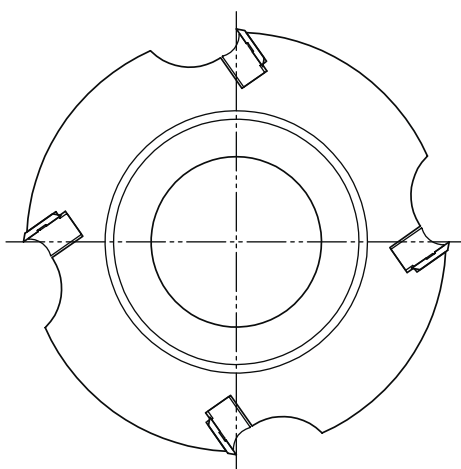


Art. 01 04



-  **TESTA A PIALLARE AD ALTO RENDIMENTO**
-  **HIGH EFFICIENCY PLANER HEADS**
-  **PORTE-OUTILS DE RABOTAGE A HAUT RENDEMENT**
-  **HOCHLEISTUNGS-HOBELKÖPFE**
-  **CABEZALES PARA CEPILLAR DE ALTO RENDIMIENTO**
-  **ВЫСОКОЭФФЕКТИВНЫЕ СТРОГАЛЬНЫЕ ГОЛОВКИ**



Cod. Acciaio Steel	Cod. Lega Light Alloy	D	L	d	Z	RPM max
100 100 00	100 100 10	100	100	30→40	3	10500
100 120 00	100 120 10	100	120	30→40	3	10500
100 130 00	100 130 10	100	130	30→40	3	10500
100 150 00	100 150 10	100	150	30→40	3	10500
100 180 00	100 180 10	100	180	30→40	3	10500
100 190 00	100 190 10	100	190	30→40	3	10500
100 200 00	100 200 10	100	200	30→40	3	10500
100 230 00	100 230 10	100	230	30→40	3	10500
125 100 00	125 100 10	125	100	30→50	4	9100
125 120 00	125 120 10	125	120	30→50	4	9100
125 130 00	125 130 10	125	130	30→50	4	9100
125 150 00	125 150 10	125	150	30→50	4	9100
125 180 00	125 180 10	125	180	30→50	4	9100
125 190 00	125 190 10	125	190	30→50	4	9100
125 200 00	125 200 10	125	200	30→50	4	9100
125 230 00	125 230 10	125	230	30→50	4	9100

Ricambi-Spare Parts

L	Cod. Coltello-Knive	Cod. Tassello-Wedge
100	I93.100	I93.100/T
120	I93.120	I93.120/T
130	I93.130	I93.130/T
150	I91.150	I91.150/T
180	I93.180	I93.180/T
190	I93.190	I93.190/T
200	I93.200	I93.200/T
230	I93.230	I93.230/T

Cod. Vite-Screw D=100	Cod. Vite-Screw D>100
V13.7/24,6CE	V13.7/18CE

