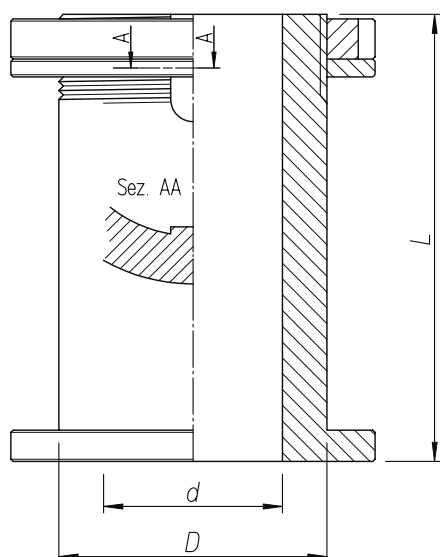


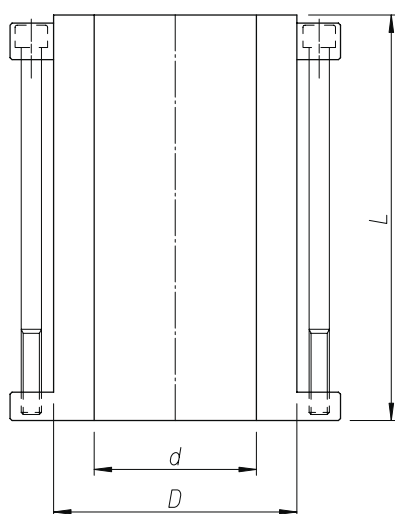
## CANNOTTI CON GHIERA SLEEVE WITH LOCKING NUT

Cod. Dx	Cod. Sx	d	D	L
E10.30D46H100	E10.30S46H100	30	46	100
E10.35D46H100	E10.35S46H100	35	46	100
E10.40D46H100	E10.40S46H100	40	46	100
E10.30D50H100	E10.30S50H100	30	50	100
E10.35D50H100	E10.35S50H100	35	50	100
E10.40D50H100	E10.40S50H100	40	50	100
E10.30D60H100	E10.30S60H100	30	60	100
E10.35D60H100	E10.35S60H100	35	60	100
E10.40D60H100	E10.40S60H100	40	60	100
E10.50D60H100	E10.50S60H100	50	60	100
E10.50D70H100	E10.50S70H100	50	70	100



## CANNOTTI CON GHIERA E CHIAVETTA SLEEVE WITH LOCKING NUT AND KEYWAYS

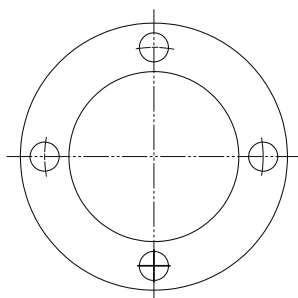
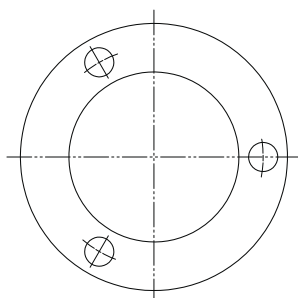
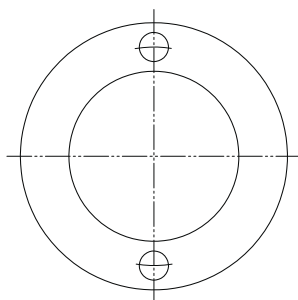
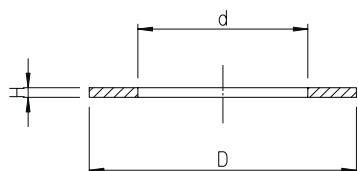
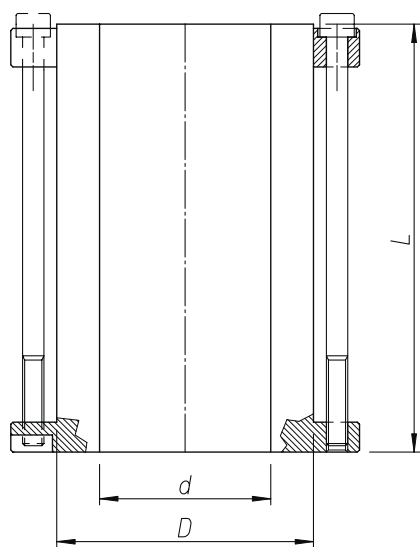
Codice Dx-RH	Codice Sx-LH	D	d	L
E17.35D60H100	E17.35S60H100	60	35	100
E17.40D60H100	E17.40S60H100	60	40	100
E17.50D60H100	E17.50S60H100	60	50	100



## CANNOTTI CON VITI SLEEVE WITH SCREWS

Cod.	d	D	L
E13.30N46H100	30	46	100
E13.35N46H100	35	46	100
E13.40N46H100	40	46	100
E13.30N50H100	30	50	100
E13.35N50H100	35	50	100
E13.40N50H100	40	50	100
E13.30N60H100	30	60	100
E13.35N60H100	35	60	100
E13.40N60H100	40	60	100
E13.50N60H100	50	60	100
E13.30N70H100	30	70	100
E13.35N70H100	35	70	100
E13.40N70H100	40	70	100
E13.50N70H100	50	70	100

## CANNOTTI CON VITI ANTISVITAMENTO SLEEVE WITH ANTI-TORSION SCREWS



Cod.	d	D	L
E13.30A46H100	30	46	100
E13.35A46H100	35	46	100
E13.40A46H100	40	46	100
E13.30A50H100	30	50	100
E13.35A50H100	35	50	100
E13.40A50H100	40	50	100
E13.30A60H100	30	60	100
E13.35A60H100	35	60	100
E13.40A60H100	40	60	100
E13.50A60H100	50	60	100
E13.30A70H100	30	70	100
E13.35A70H100	35	70	100
E13.40A70H100	40	70	100
E13.50A70H100	50	70	100

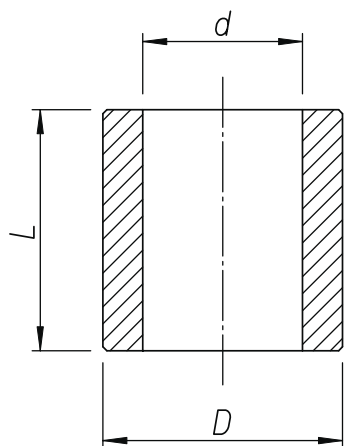
## ANELLI DISTANZIALI - SPACERS

d	D	h	n° fori
7	13,5	0,1-0,2-0,3-0,5-1	0
7	13,5	2-3-4-5	0
12	18	0,1-0,3-0,5-1	0
22	40	0,1-0,3-0,5-1	0-2-3
25	50	0,1-0,3-0,5-1	0-3
30	50	0,1-0,3-0,5-1	2-3-4
30	50	2-3-5-7	2-3-4
30	50	10-12-14-16-20-25-30	2-3-4
30	60	0,1-0,3-0,5-1	4
30	60	2-3-5-7	4
30	60	10-12-14-16-20-25-30	4
35	55	0,1-0,3-0,5-1	0
35	55	2-3-5-7	0
35	55	10-12-14-16-20-25-30	0
35	60	0,1-0,3-0,5-1	4
35	60	2-3-5-7	4
35	60	10-12-14-16-20-25-30	4
40	60	0,1-0,3-0,5-1	0-4
40	60	2-3-5-7	0-4
40	60	10-12-14-16-20-25-30	0-4
46	63	0,1-0,3-0,5-1	0-2
46	63	2-3-5-7	0-2
46	63	10-12-14-16-20	0-2
46	63	24-25-28-29-30-35-39	0-2
50	72	0,1÷1	0-3-4
50	72	2÷8	0-3-4
50	72	9÷20	0-3
50	72	21÷65	0-3
60	82	0,1÷1	0-3
60	82	2÷8	0-3
60	82	9÷20	0-3
60	82	21÷65	0-3
70	93	0,1÷1	4
70	93	2÷8	4
70	93	9÷20	4
70	93	21÷65	4

Tutti i cannotti sono forniti privi dei distanziali.  
Sleeves are supplied without spacers.

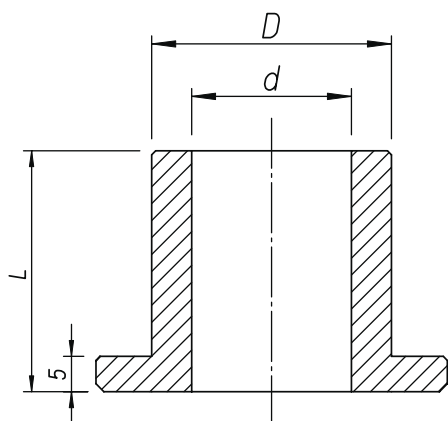
**VIVALDI**

## RIDUZIONI CILINDRICHE REDUCING SLEEVE WITHOUT COLLAR



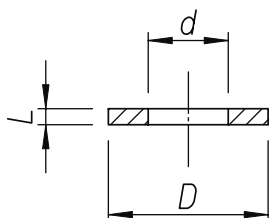
Cod. L=13	Cod. L=36	Cod. L=51	Cod. L=99	Cod. L=109	D	d
E25.30-35L013	E25.30-35L036	E25.30-35L051	E25.30-35L099	E25.30-35L109	35	30
E25.35-40L013	E25.35-40L036	E25.35-40L051	E25.35-40L099	E25.35-40L109	40	35
E25.30-40L013	E25.30-40L036	E25.30-40L051	E25.30-40L099	E25.30-40L109	40	30
E25.40-50L013	E25.40-50L036	E25.40-50L051	E25.40-50L099	E25.40-50L109	50	40
E25.35-50L013	E25.35-50L036	E25.35-50L051	E25.35-50L099	E25.35-50L109	50	35
E25.30-50L013	E25.30-50L036	E25.30-50L051	E25.30-50L099	E25.30-50L109	50	30

## RIDUZIONI CON BATTUTA REDUCING SLEEVE WITH COLLAR



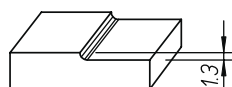
Cod. L=10	Cod. L=36	d	D
E26.30-35L10	E26.30-35L36	30	35
E26.30-40L10	E26.30-40L36	30	40
E26.30-50L10	E26.30-50L36	30	50
E26.35-40L10	E26.3540L36	35	40
E26.35-50L10	E26.3550L36	35	50
E26.40-50L10	E26.4050L36	40	50

## RIDUZIONI PER LAMA REDUCTIONS FOR SAW BLADES



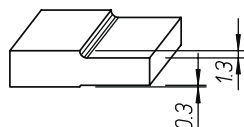
Cod. Dx-RH	d	D	L
E20.20-30L2	20	30	2
E20.25-30L2	25	30	2
E20.25-35L2	25	35	2
E20.30-35L2	30	35	2

## CALIBRO DI POSIZIONAMENTO (1 Posizione) POSITIONING CALIBER (1 Position)



Cod.  
E35.1,3

## CALIBRO DI POSIZIONAMENTO (2 Posizioni) POSITIONING CALIBER (2 Positions)



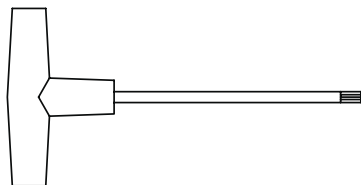
Cod.  
E35.0,3/1,3

## CHIAVE PER GHIERE - SERVICING KEYS FOR BUSHES



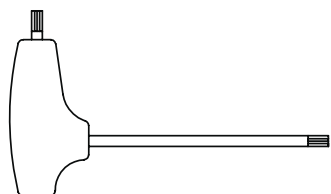
Cod.	Ø
V50.45/50	45÷50
V50.52/55	52÷55
V50.58/62	58÷62
V50.68/75	68÷75
V50.80/90	80÷90

## CHIAVE ESAGONALE - ALLEN KEYS

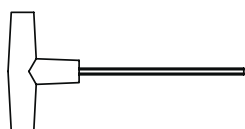


Cod.	S
V52.25L	2,5
V52.30L	3
V52.40L	4
V52.50L	5
V52.60L	6

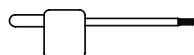
## CHIAVI TORX - TORX KEYS



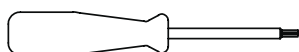
Cod.	T
V63.09	9
V63.10	10
V63.15	15
V63.20	20
V63.25	25



Cod.	T
V61.15N	15
V61.20N	20
V61.25N	25



Cod.	T
V64.09	9

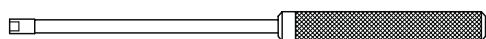


Cod.	T
V62.09	9



Cod.	T
V65.20	20
V65.25	25

## CHIAVE A TESTA QUADRA - SQUARE HEAD KEYS



Cod.	T
V65.3x3	3x3
V65.4x4	4x4

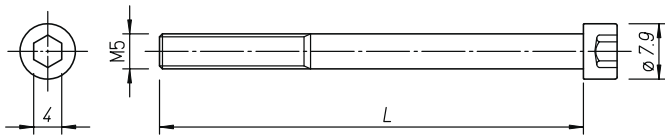
## GRASSO PER VITI - GREASE FOR SCREWS



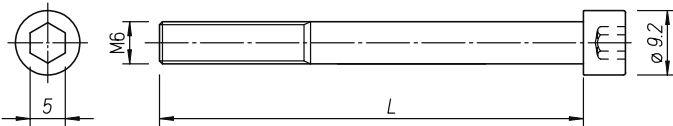
Cod.
H32.0001

**VIVALDI**

## VITI PER MOZZO - SCREWS FOR FLANGES

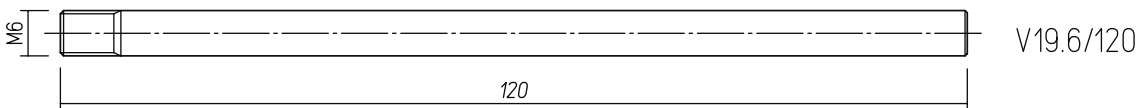
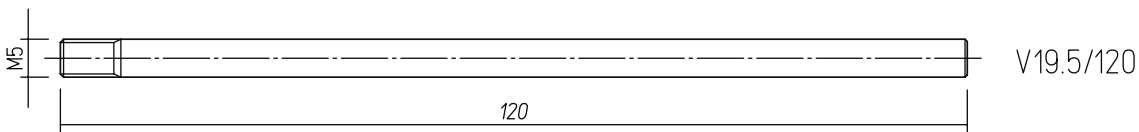


Cod.	L	Cod.	L	Cod.	L
V11.5/050	50	V11.5/075	75	V11.5/100	100
V11.5/055	55	V11.5/080	80	V11.5/110	110
V11.5/060	60	V11.5/085	85	V11.5/120	120
V11.5/065	65	V11.5/090	90		
V11.5/070	70	V11.5/095	95		

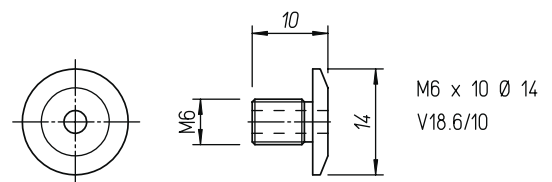
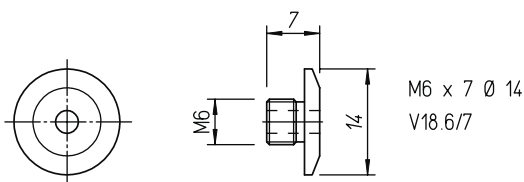
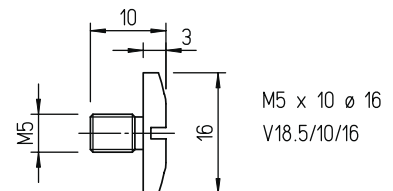
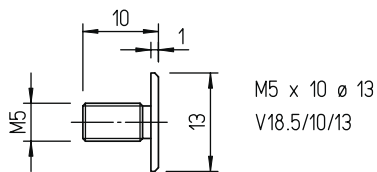


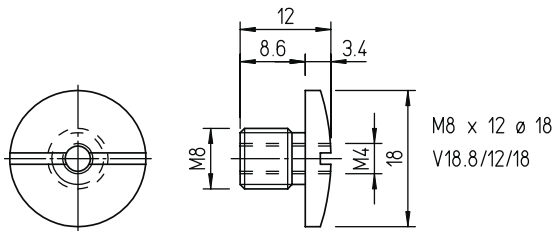
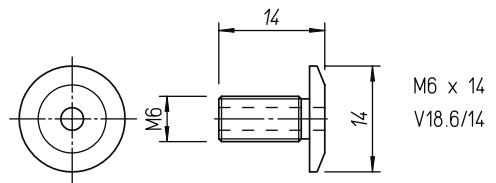
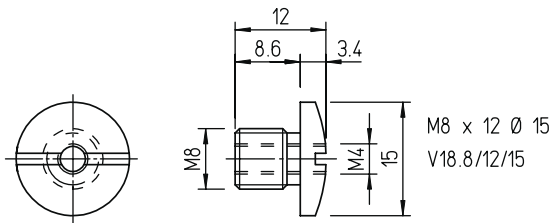
Cod.	L	Cod.	L	Cod.	L
V11.6/015	15	V11.6/060	60	V11.6/105	105
V11.6/020	20	V11.6/065	65	V11.6/110	110
V11.6/025	25	V11.6/070	70	V11.6/115	115
V11.6/030	30	V11.6/075	75	V11.6/120	120
V11.6/035	35	V11.6/080	80	V11.6/125	125
V11.6/040	40	V11.6/085	85	V11.6/130	130
V11.6/045	45	V11.6/090	90	V11.6/140	140
V11.6/050	50	V11.6/095	95	V11.6/150	150
V11.6/055	55	V11.6/100	100	V11.6/200	200

## PERNI DI POSIZIONAMENTO - POSITIONING SCREWS

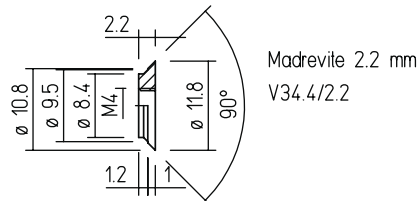
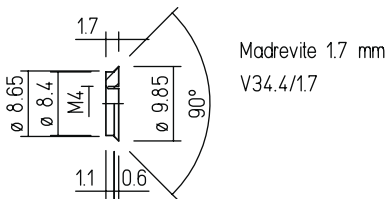


## FERMI DI POSIZIONAMENTO - ALLEN HEAD SCREW

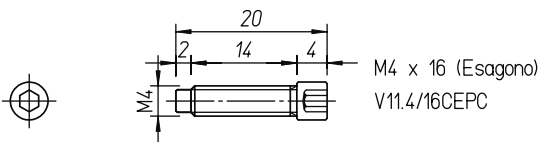
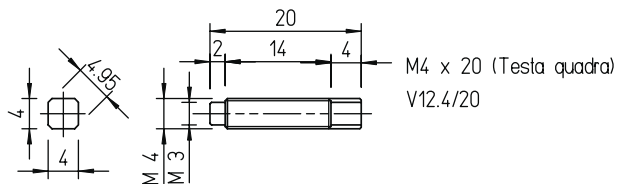
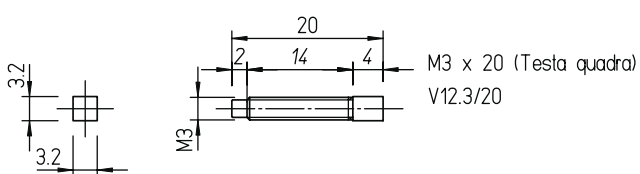




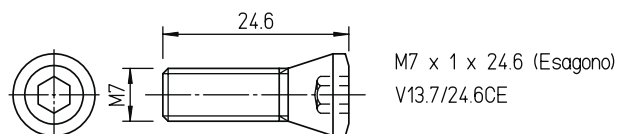
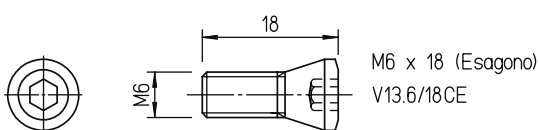
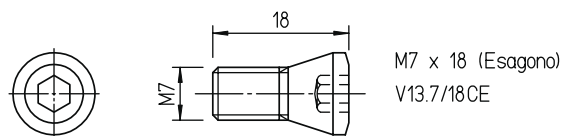
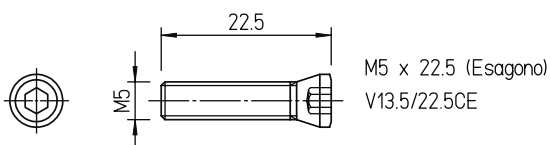
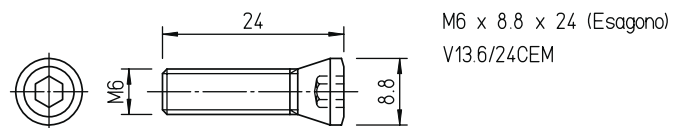
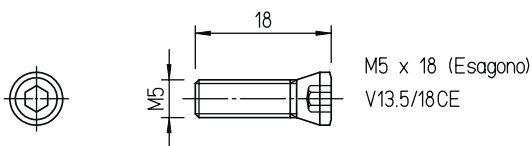
## MADREVITI - SCREWS

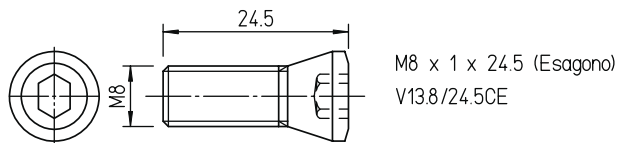
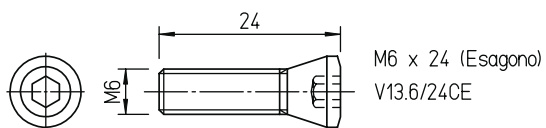
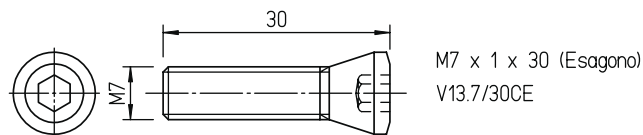
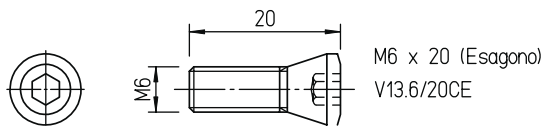


## VITI TESTA QUADRA

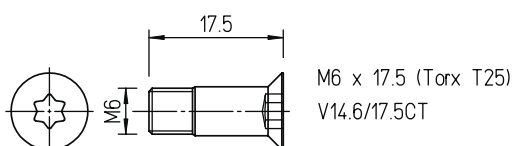
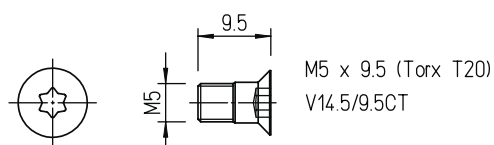
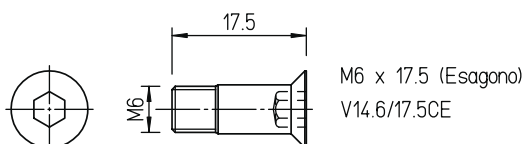
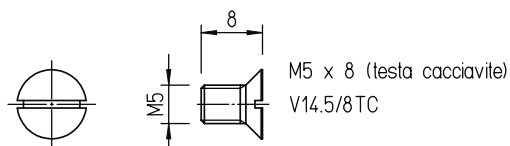
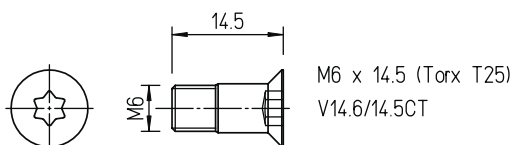
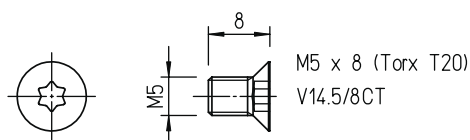
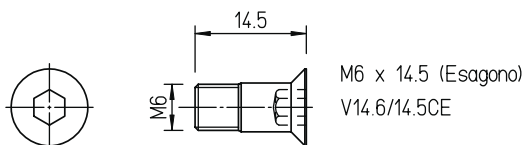
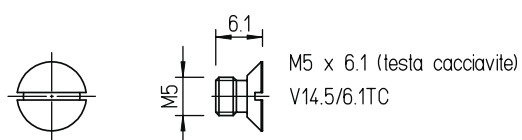
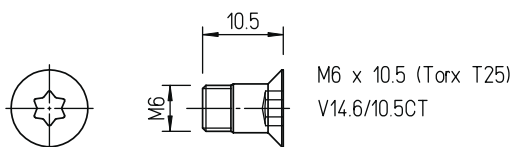
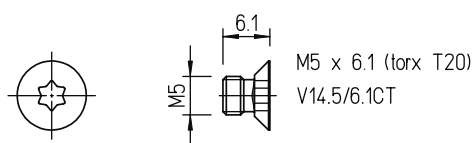
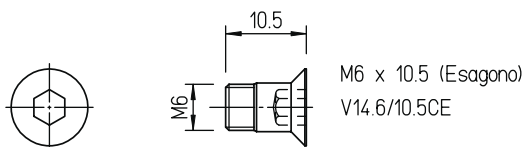
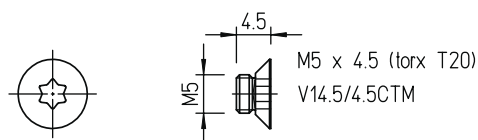
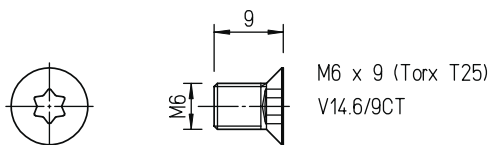
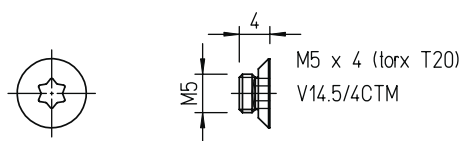
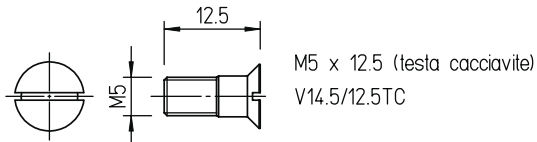
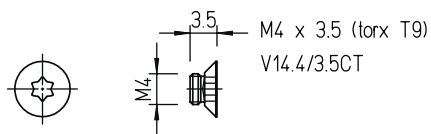


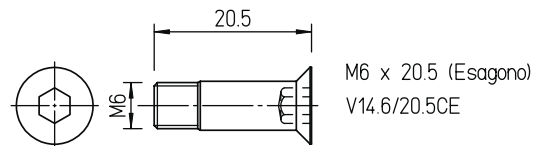
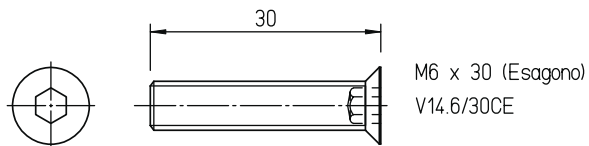
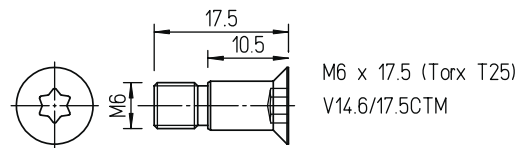
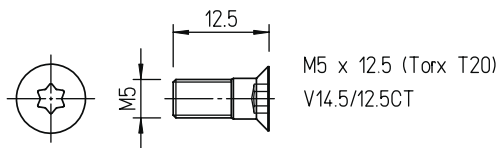
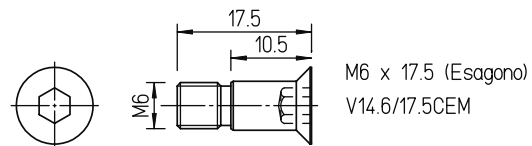
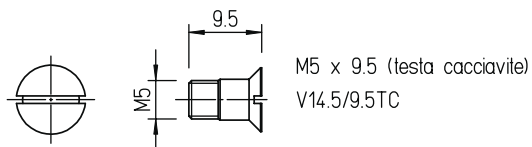
## VITI TESTA CONICA - CONICAL HEAD SCREWS



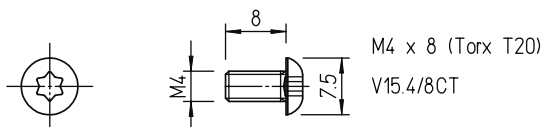
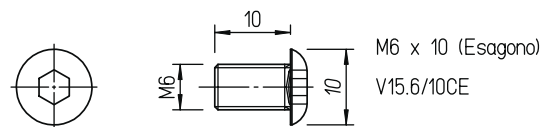
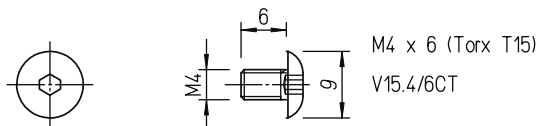


## VITI TESTA SVASATA - EDGE SCREWS

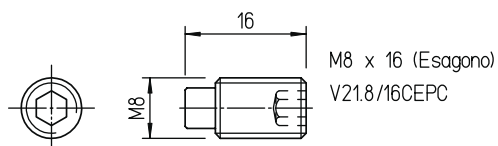
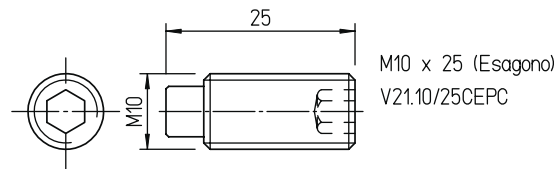
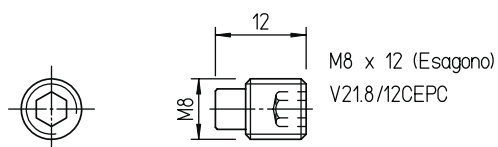
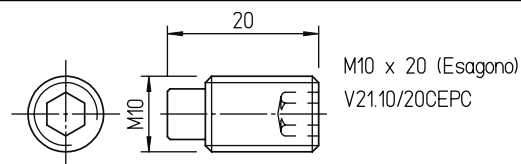
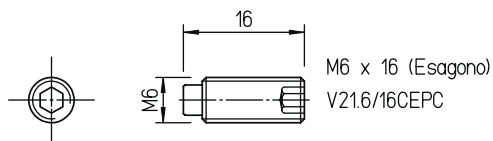
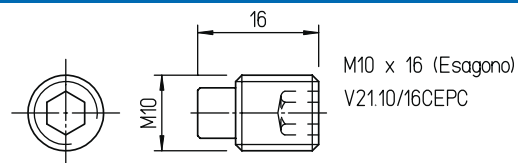
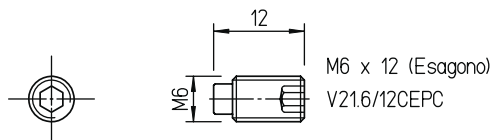




### VITI TESTA BOMBATA - SCREWS

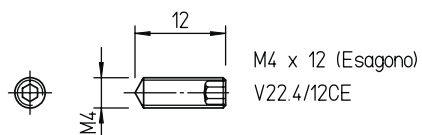


### GRANI PUNTA CILINDRICA - CYLINDRICAL PINS

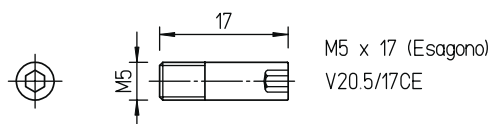
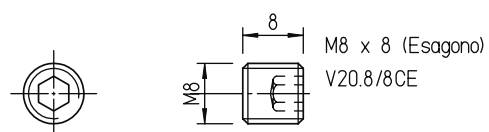
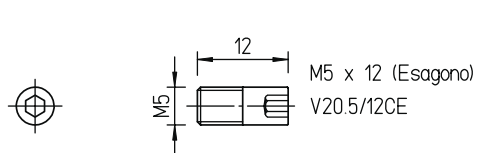
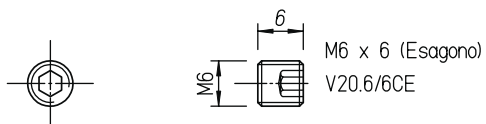
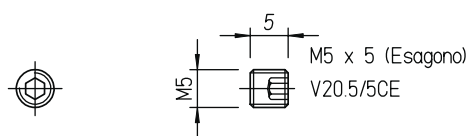




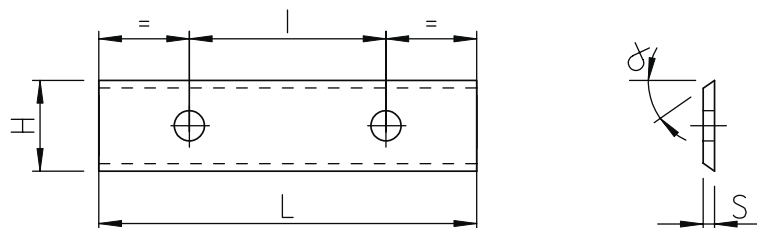
## GRANI PUNTA CONICA - CONICAL PINS



## GRANI PUNTA PIANA - STRAIGHT PINS

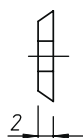
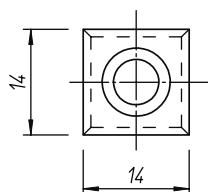


## COLTELLI STANDARD - STANDARD CARBIDE INSERTS

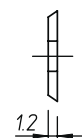
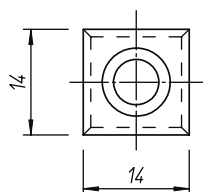


Cod. $\alpha=35^\circ$	Cod. $\alpha=45^\circ$	L	I	S
I10.01	I20.01/45	7,6	-	1,5
I10.02A	I20.02A45	9,65	-	1,5
I10.02	I20.02/45	12	-	1,5
I10.03	I20.03/45	15	-	1,5
I10.04	I20.04/45	20	-	1,5
I10.14	I20.14/45	25	14	1,5
I10.05	I20.05/45	30	26	1,5
I10.06	I20.06/45	40	26	1,5
I10.07	I20.07/45	50	26	1,5
I10.11	I20.11/45	60	26	1,5
I10.12	I20.12/45	80	60	2,2
I10.08	I20.08/45	100	60	2,2
I10.13	I20.13/45	120	60	2,2

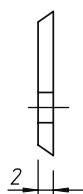
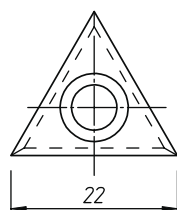
## INCISORI - SPURS



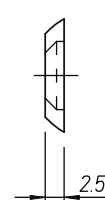
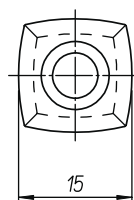
Cod.  
I15.09



Cod.  
I15.10

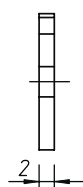
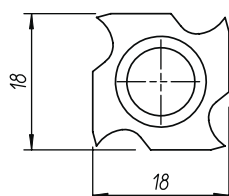


Cod.  
I15.15

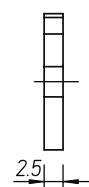
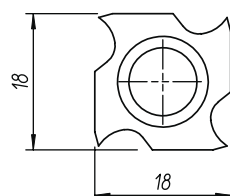


Cod.  
I15.19

## COLTELLI A SETTORE - GROOVING KNIVES

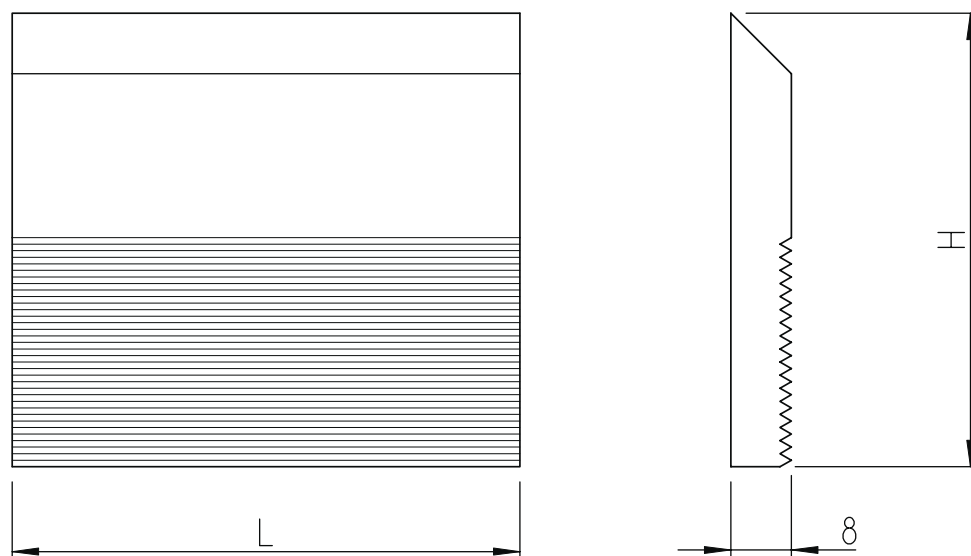


Cod.  
I26.016



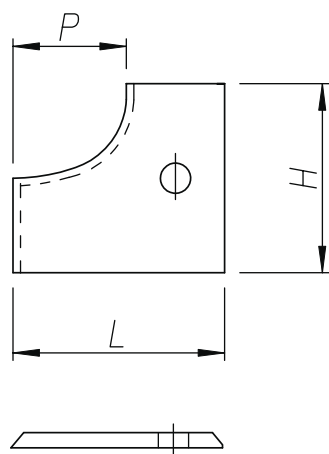
Cod.  
I26.017

## COLTELLI ZIGRINATI - BACK SERRATED KNIVES



L	H=50mm		H=60mm		H=70mm	
	Cod. HS	Cod. HW	Cod. HS	Cod. HW	Cod. HS	Cod. HW
60	G35.50/60	G37.50/60	G35.60/60	G37.60/60	G35.70/60	G37.70/60
80	G35.50/80	G37.50/80	G35.60/80	G37.60/80	G35.70/80	G37.70/80
100	G35.50/100	G37.50/100	G35.60/100	G37.60/100	G35.70/100	G37.70/100
130	G35.50/130	G37.50/130	G35.60/130	G37.60/130	G35.70/130	G37.70/130
180	G35.50/180	G37.50/180	G35.60/180	G37.60/180	G35.70/180	G37.70/180
230	G35.50/230	G37.50/230	G35.60/230	G37.60/230	G35.70/230	G37.70/230

## COLTELLI SAGOMATI HW 2mm A DISEGNO PROFIED CARBIDE KNIVES 2 MM FROM DRAWING



H	Pmax=10mm	Pmax=15mm	Pmax=20mm
	Cod.	Cod.	Cod.
20	I60.20/10S	I60.20/15S	I60.20/20S
25	I60.25/10S	I60.25/15S	I60.25/20S
30	I60.30/10S	I60.30/15S	I60.30/20S
35	I60.35/10S	I60.35/15S	I60.35/20S
40	I60.40/10S	I60.40/15S	I60.40/20S
50	I60.50/10S	I60.50/15S	I60.50/20S
60	I60.60/10S	I60.60/15S	I60.60/20S